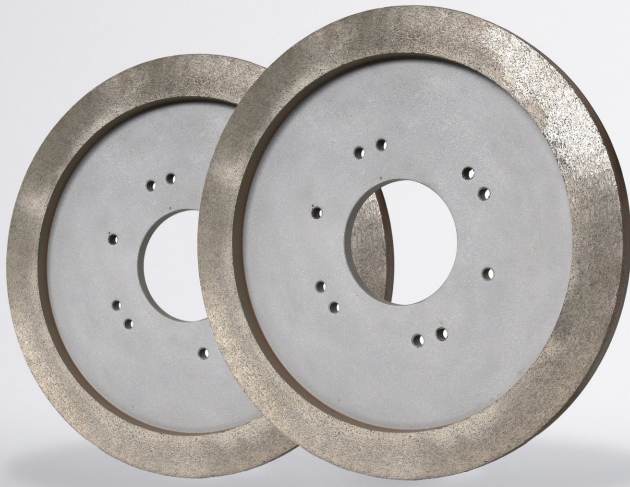


RECTIFICADO SECO  
DRY SQUARING  
CALIBRATION A SEC





**NILO**

300 x 30 x 10

250 x 30 x 10

GRUESA EXTRA

GRUESA

MEDIA

FINA



**CAIRO**

300 x 15 x 15

GRUESA EXTRA

GRUESA

MEDIA

FINA

FINA EXTRA



**ESPIRAL NILO**

300 x 30 x 10

GRUESA EXTRA

GRUESA

MEDIA



**LUXOR**

300 x 12 x 15

250 x 12 x 15

GRUESA EXTRA

GRUESA

MEDIA

FINA



**ESPIRAL**

300 x 40 x 15



00 / 0 / 1 / 2



**FUSION CONTINUA**

300 x 40 x 15



**FUSION 20 CONTINUA**

300 x 20 x 15

300 x 12 x 15

GG / G / M

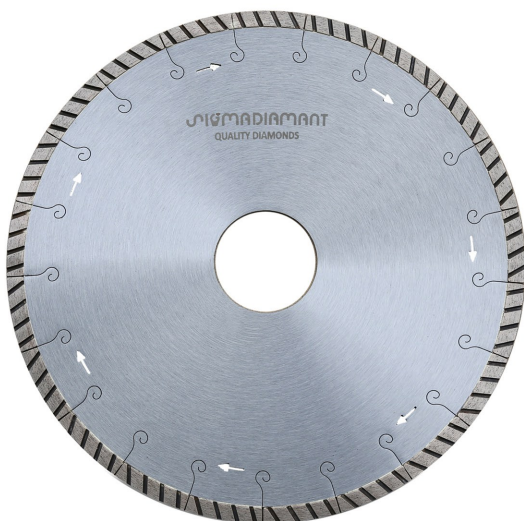
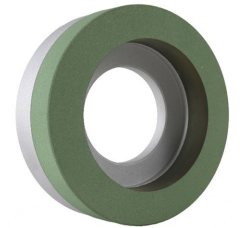
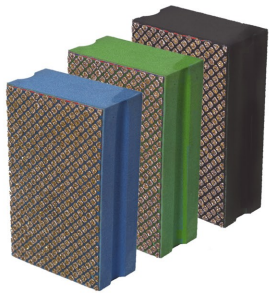


**DOBLE ARO CONTINUA**

300 x 20 x 20 x 15

S0 / S1 / S2

# CORTE - BISELADO / CUT - CHAMFERING / COUPE - CHANFREIN



Polígono Industrial Supoi 8  
Parcela M5 B1 Nave 17  
12550 ALMAZORA, Castellón - SPAIN  
Apto. Correos 8149 - 12088 Castellón  
Tél. / Fax 964 562 713  
[info@sigmadiamant.com](mailto:info@sigmadiamant.com)



[www.sigmadiamant.com](http://www.sigmadiamant.com)