

PULIDO / POLISHING / POLISSAGE

The logo for Sigma Diamant is centered on the page. It features the word "Sigma" in a bold, black, sans-serif font. The letter "i" is replaced by an orange diamond shape. Below "Sigma" is the word "DIAMANT" in a smaller, black, sans-serif font. The letter "D" is significantly larger and colored orange. The entire logo is enclosed within a large, orange, diamond-shaped outline that points to the right.

**Sigma**  
**DIAMANT**

The Sigma LAB logo consists of the word "Sigma" in black, with the "i" as an orange diamond, and the word "LAB" in orange below it.

**Sigma**  
**LAB**

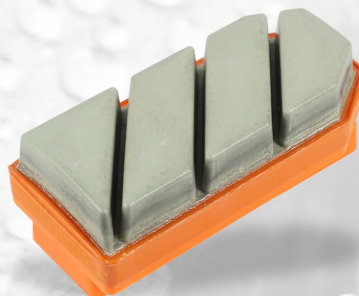
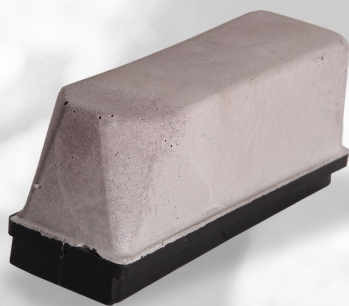
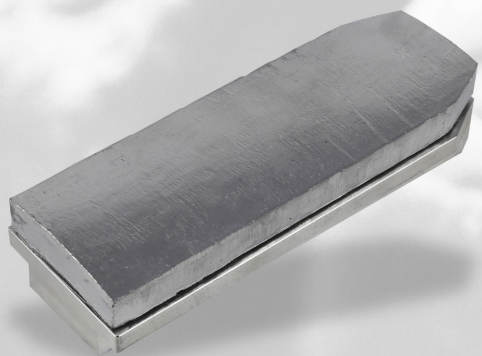
The Sigma Dry logo consists of the word "Sigma" in black, with the "i" as an orange diamond, and the word "Dry" in green below it.

**Sigma**  
**Dry**

The Sigma Tech logo consists of the word "Sigma" in black, with the "i" as an orange diamond, and the word "Tech" in blue below it.

**Sigma**  
**Tech**

PULIDO BRILLO / GLOSS FINISHING / POLISSAGE BRILLANT

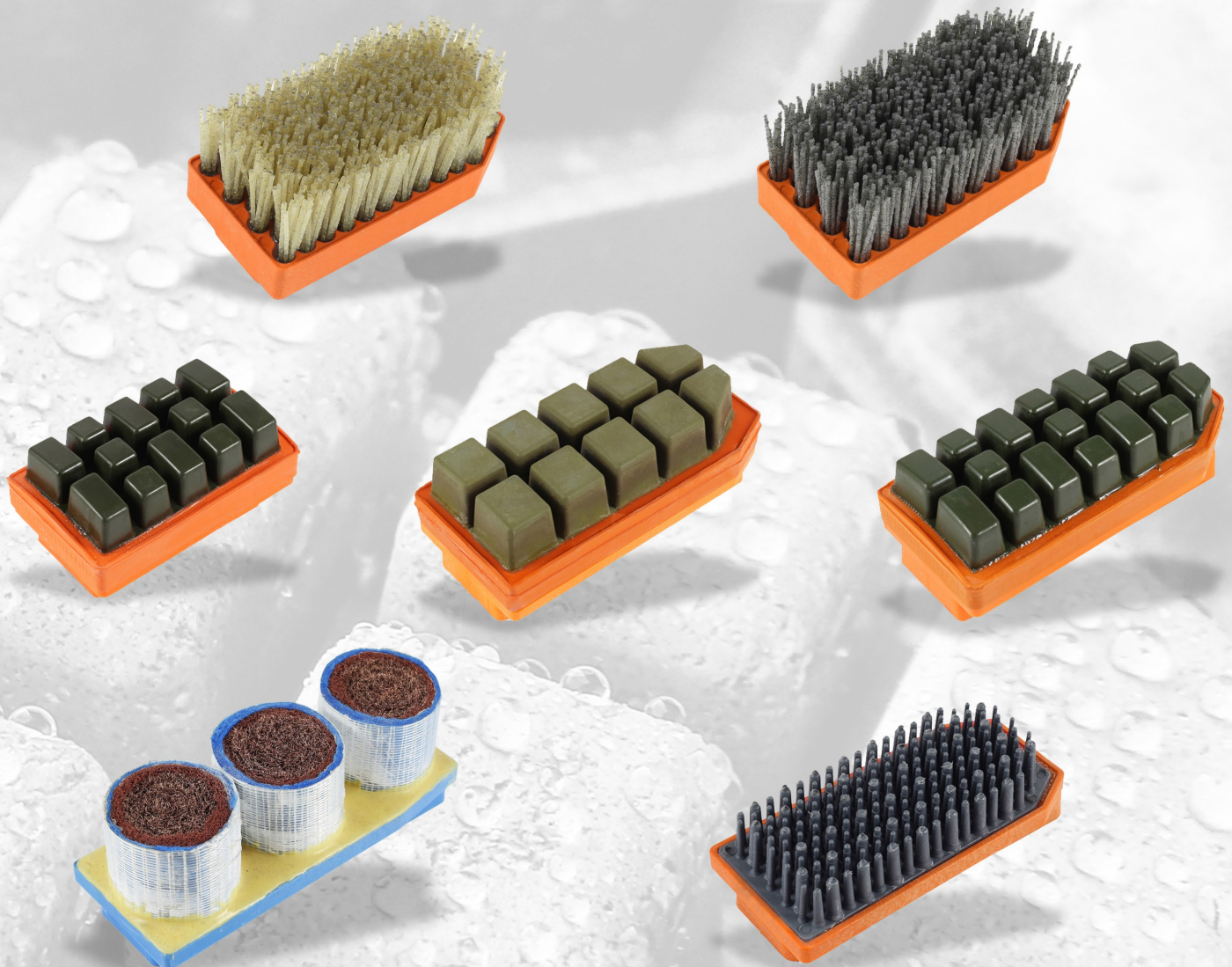




PULIDO MATE / MATT FINISHING / FINITION MATE



LAPADO CRESTA O SEMIPULIDO / LAPATTO OR SEMIPOLISHING  
LAPPATO OU SEMI - POLI





PROTECCIÓN SUPERFICIAL POST PULIDO  
POST-POLISHING SURFACE PROTECTION  
PROTECTION DE LA SURFACE APRÈS POLISSAGE



Polígono Industrial Supoi 8  
Parcela M5 B1 Nave 17  
12550 ALMAZORA, Castellón - SPAIN  
Apto. Correos 8149 - 12088 Castellón  
Tél. / Fax 964 562 713  
[info@sigmadiamant.com](mailto:info@sigmadiamant.com)



[www.sigmadiamant.com](http://www.sigmadiamant.com)