

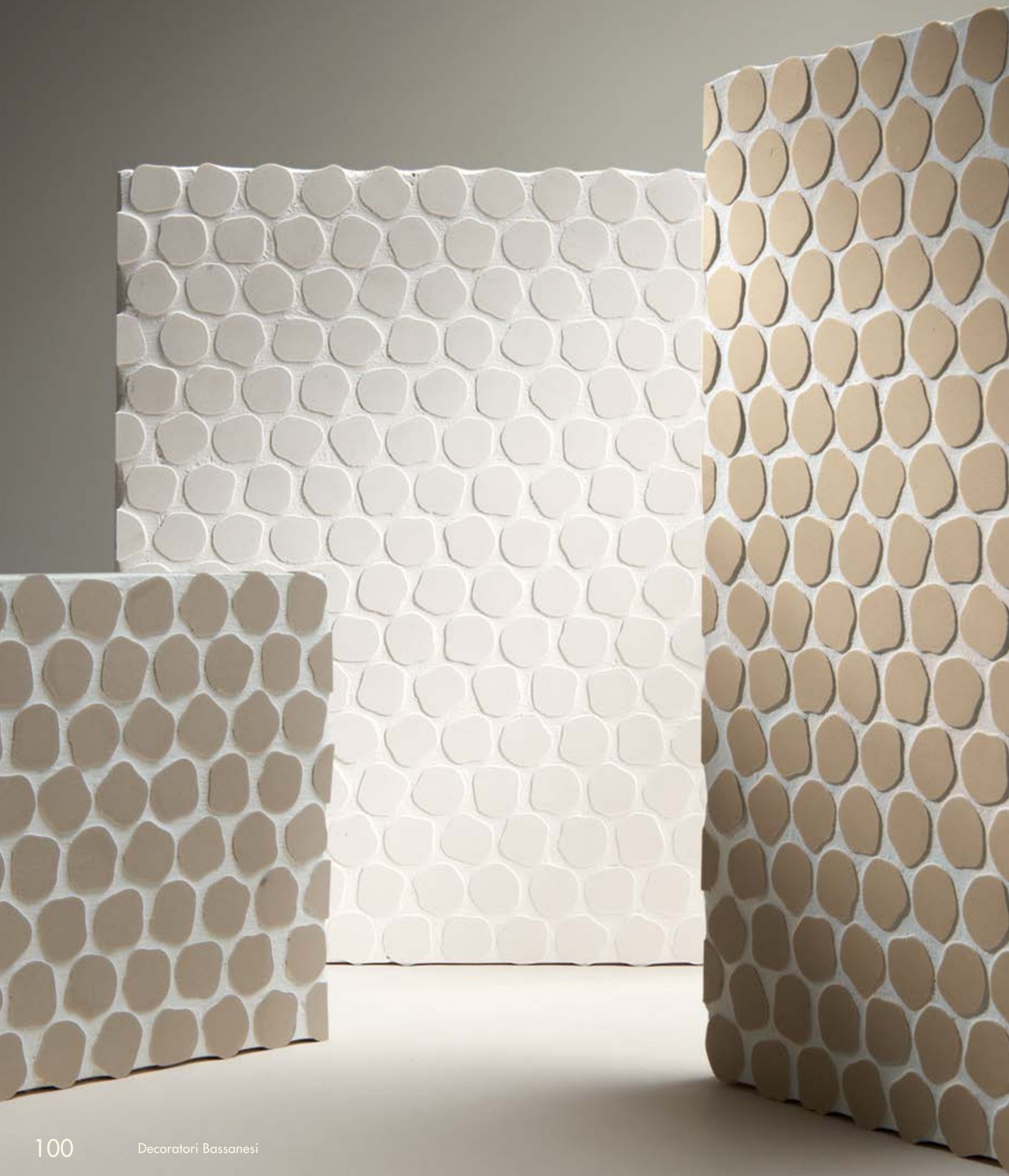
Design Collection

Bonbon

DECORATORI[®]
BASSANESI

ITALIA  1988

DECORATORI®
BASSANESI
ITALIA  1988

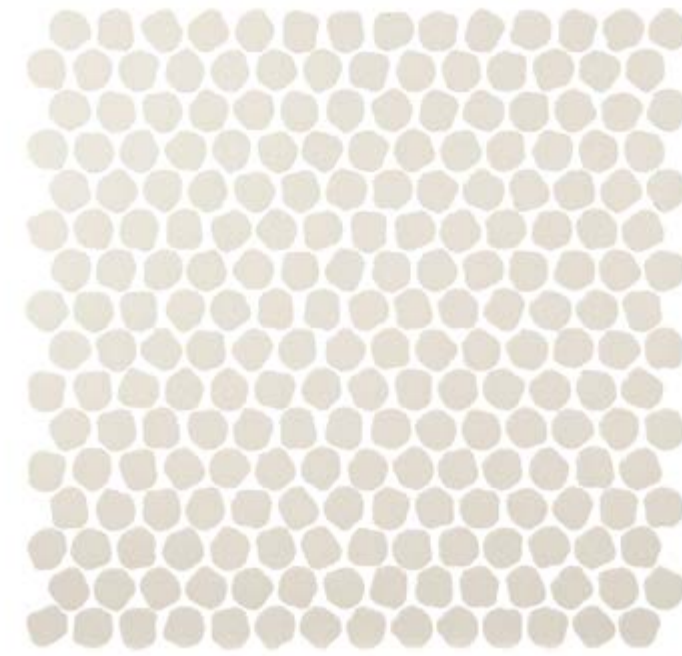


Collection

Bonbon

Designer

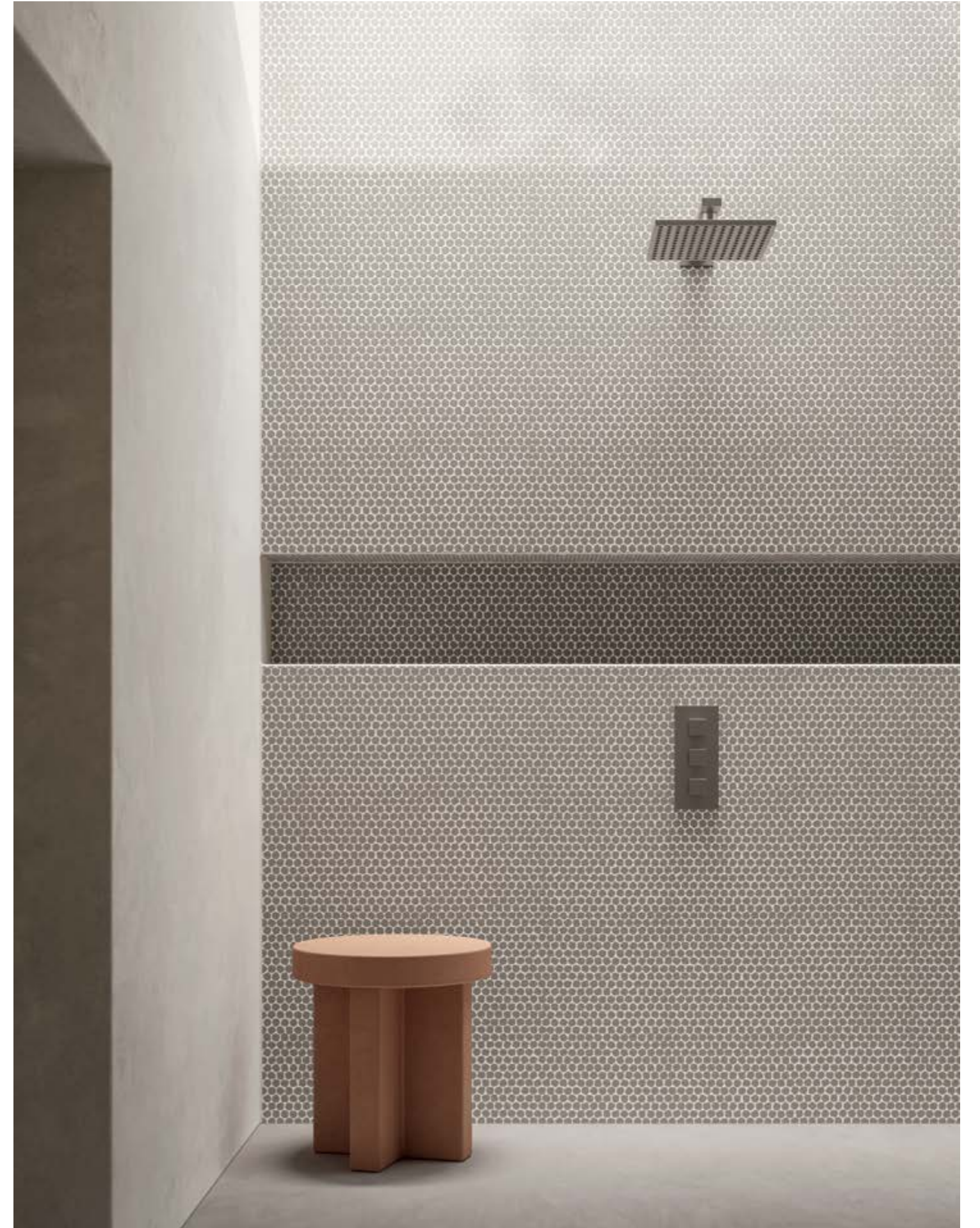
Paola Navone



IT Pastiglie di forme irregolari, dai colori tenui e polverosi, formano un inedito mosaico. Paola Navone disegna una collezione delicata e morbida nelle linee, ma dalla forte personalità, che sa essere ironica e divertente, rimanendo sempre stilosa. In versione tinta unita richiama al fascino poetico dei rivestimenti senza tempo. In versione mélange gioca con colori e forme, per effetti inaspettati.

EN Irregular shapes like old-fashioned sugar candies in dusty pastel colours create a unique mosaic. Paola Navone has designed a delicate collection built on soft lines and a strong personality. Always stylish, it never lacks a touch of humour and whimsy. In its monochrome version it recalls the timeless poetic elegance of classic wall coverings. Its multicolour variation plays with colours and forms to create unexpected effects.









Paola Navone



IT Schietta, sognatrice, eclettica: nella sua anima convivono sapori e colori del sud del mondo, conosciuto, amato, frequentato, unite al gusto e alle forme dell'Occidente ricco di tradizioni, aperto, in movimento. Da tutto ciò, la sua inesauribile curiosità alla ricerca di materie, forme e strutture, al presente, passato e futuro.

È architetto, designer, art director, interior designer. Moltissime le mostre e gli allestimenti curati in tutto il mondo.

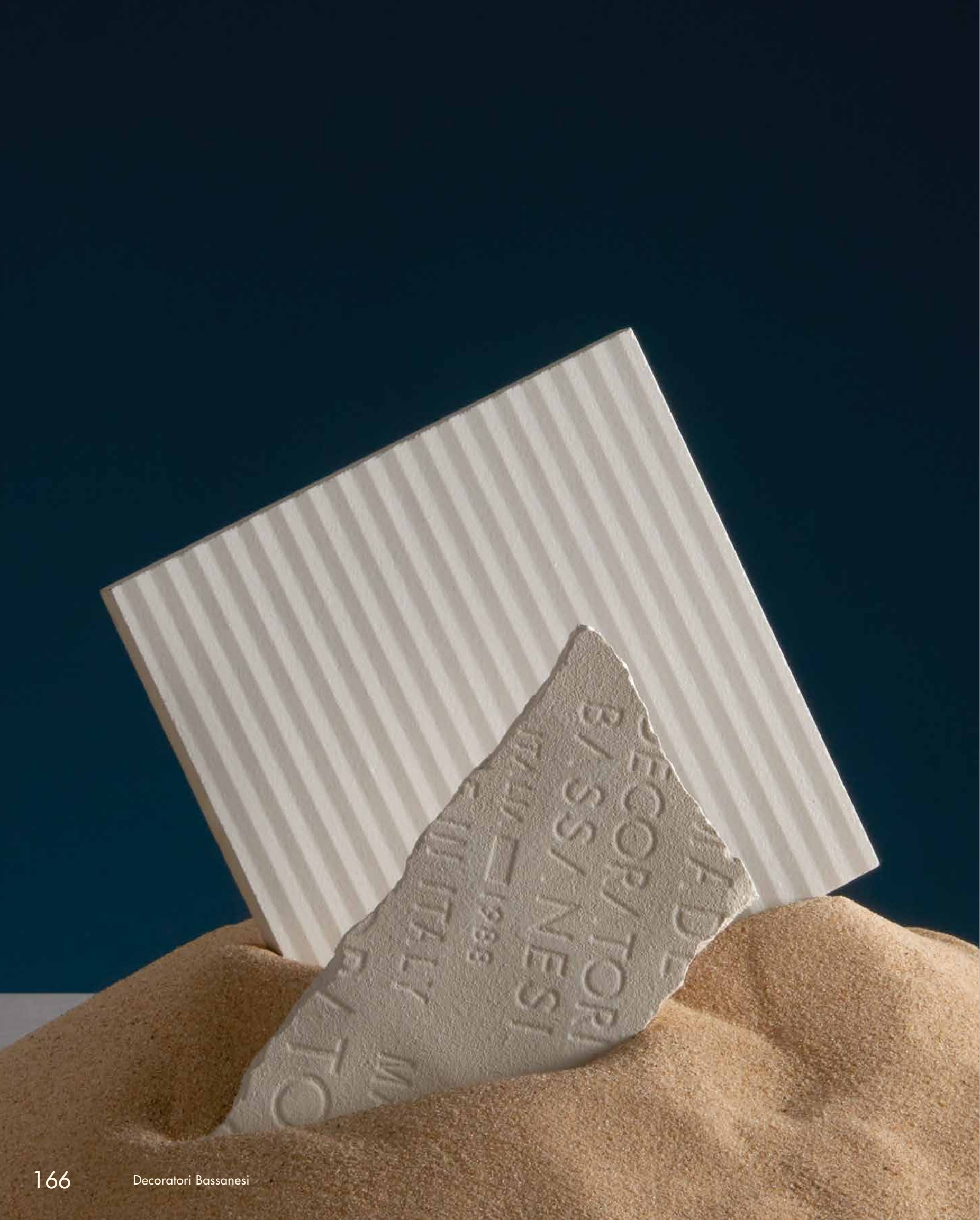
Nell'83 vince l'International Design Award di Osaka, nel 2000 è Designer dell'anno per la rivista tedesca Architektur & Wohnen e nel 2011 vince con 2 progetti l'Elle Deco International Design Awards. Nel 2014 riceve dalla rivista Interior Design Magazine la prestigiosa nomina a far parte della Hall of Fame del Design. Vanta collaborazioni con le firme più illustri dello scenario internazionale del mondo del design come Branzi, Sottsass, Mendini.

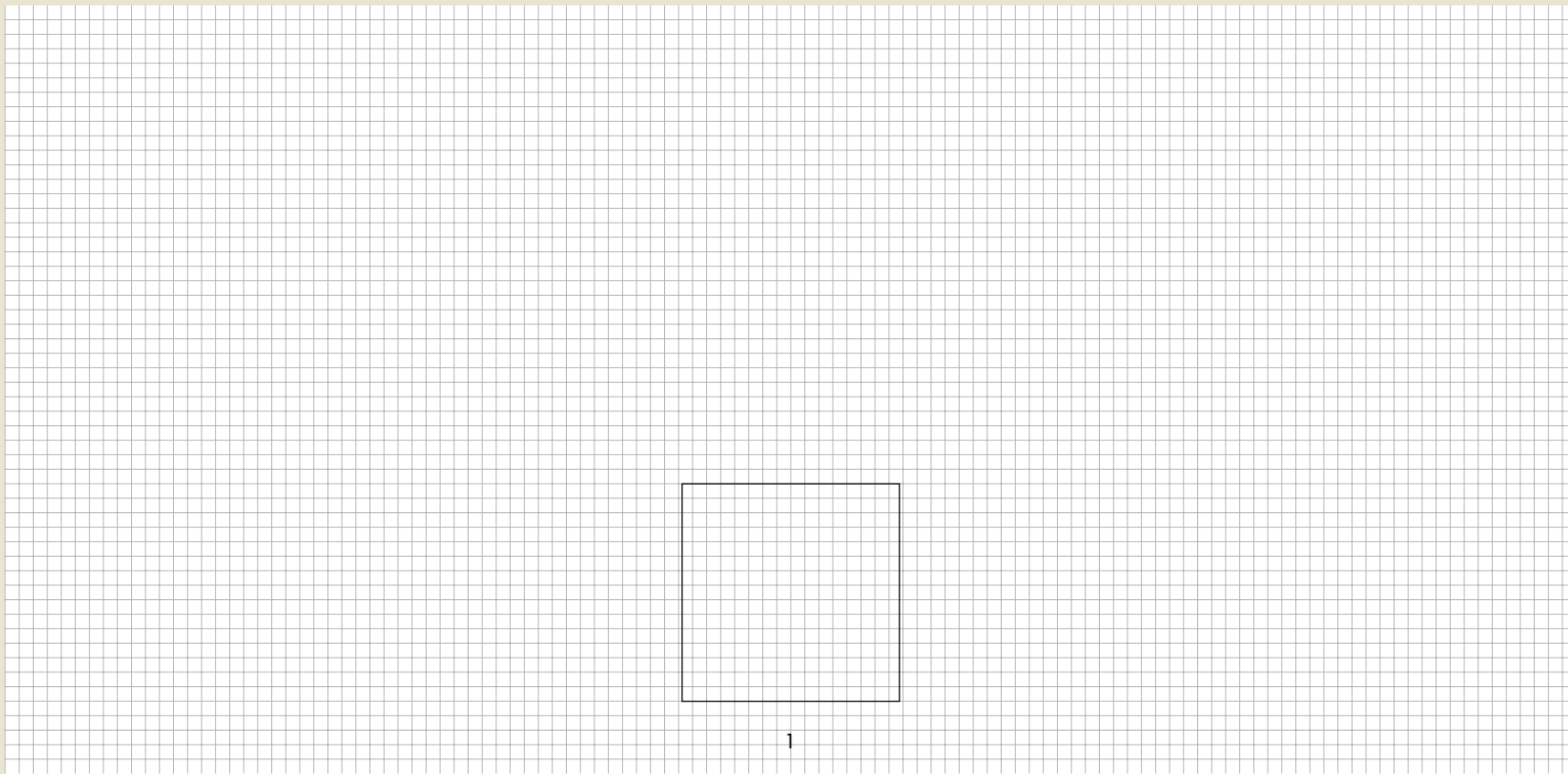
EN An open and eclectic dreamer: the flavours and colours of the global South that she knows and loves live in her mind and soul, in harmony with the taste and forms of the Western world and its rich traditions – open and in motion. All of this is the basis for the unquenchable curiosity of her constant search for materials, forms and structures, in the past, present and future.

She is an architect, designer, art director and interior decorator.

She has curated numerous exhibitions and shows throughout the world: in 1983 she won the International Design Award in Osaka, and in 2000 she was named Designer of the Year by the German magazine, Architektur & Wohnen. In 2011 two of her projects won the Elle Deco International Design Awards, and in 2014 she was nominated to the prestigious Design Hall of Fame by Interior Design Magazine. She has worked with some of the most famous design companies on the international scene, including Branzi, Sottsass and Mendini.





Bonbon**Paola Navone**

Dimensione	cm	inches	Size
Nominale	30,5 x 30,5	12" x 12"	Nominal
Reale	30,5 x 30,5	12" x 12"	Real

BONBON (1)

Spessore	Thickness
5 MM	

Colori Colors



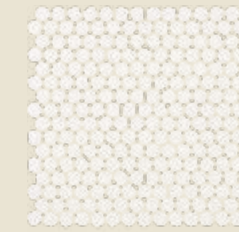
(A) White · (B) Ecrù · (C) Ocra · (D) Mud · (E) Skyblue · (F) Aquamarine · (G) Ardesia · (H) Smoke

Lavorazione Finishing

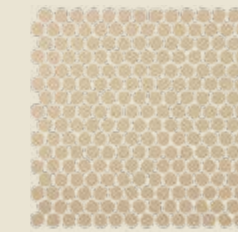
Gres porcellanato tutta massa non smaltato UGL

Unglazed (UGL) full-body porcelain stoneware

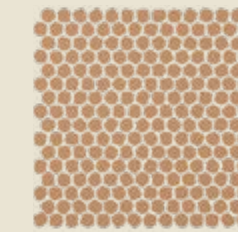
Nota Note



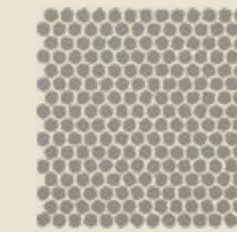
COD. BONBONWH

Bonbon
White

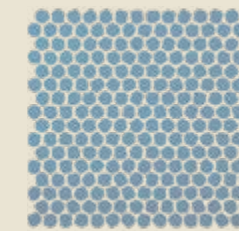
COD. BONBONEC

Bonbon
Ecrù

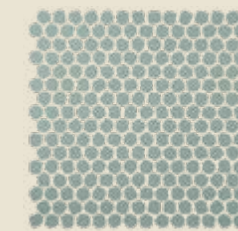
COD. BONBONOC

Bonbon
Ocra

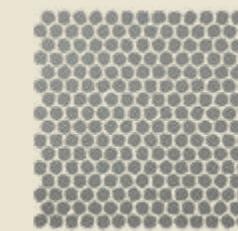
COD. BONBONMU

Bonbon
Mud

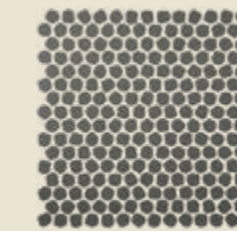
COD. BONBONSB

Bonbon
Skyblue

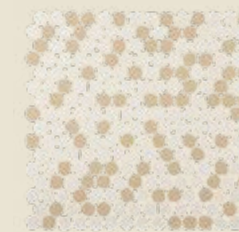
COD. BONBONAQ

Bonbon
Aquamarine

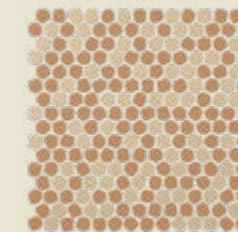
COD. BONBONAR

Bonbon
Ardesia

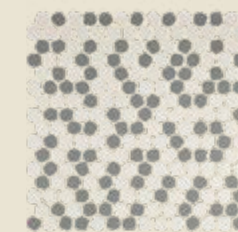
COD. BONBONSM

Bonbon
Smoke

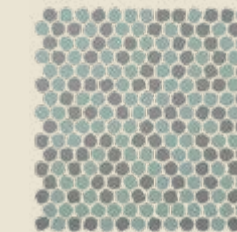
COD. BONBONMIXE

Bonbon
White e Ecrù
(A + B)

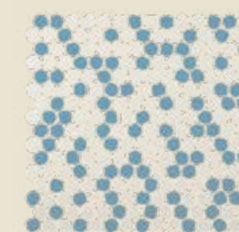
COD. BONBONMIXF

Bonbon
White e Ecrù e Ocra
(B + C)

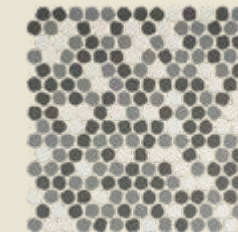
COD. BONBONMIXA

Bonbon
White e Ardesia
(A + G)

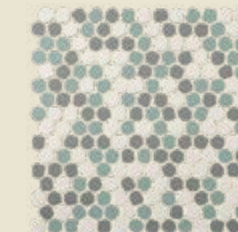
COD. BONBONMIXB

Bonbon
Aquamarine e Ardesia
(F + G)

COD. BONBONMIXG

Bonbon
White, Skyblue
(A + E)

COD. BONBONMIXC

Bonbon
White, Ardesia e Smoke
(A + G + H)

COD. BONBONMIXD

Bonbon
White, Aquamarine e Ardesia
(A + F + G)

Credits

Art direction Federica Biasi

Graphic design Giulia Ferraris

Photography Matteo Imbriani, Stefania Zanetti with Matteo Bellomo, Studio Biasi

Text Clarissa Biasi

Photo previews catalogue (63, 68, 69, 70, 71, 81, 84, 92, 128, 129, 148) Dogtrot Concept Image

3D visualizations Operavisual

Print Grafiche Antiga

Special thanks to Gervasoni, Davide Groppi, Nicole Giavaldi, Emanuela Dassisti

Decoratori Bassanesi srl

Sede legale:

Largo Perlasca, 19 | 36061
Bassano del Grappa (VI)

Uffici e depositi:

via Vallina Orticella, 48 | 31030
Borso del Grappa (TV)

+39 0423 910076

info@decoratoribassanesi.it
decoratoribassanesi.it