

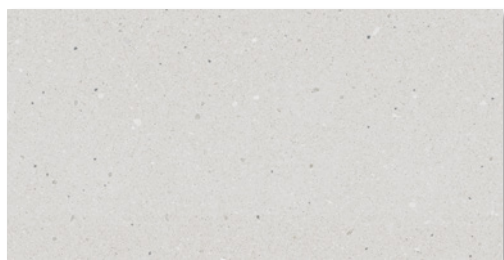


dMatera Grigio / dMatera Notte

dMatera

Rectificado
Wall Tiles

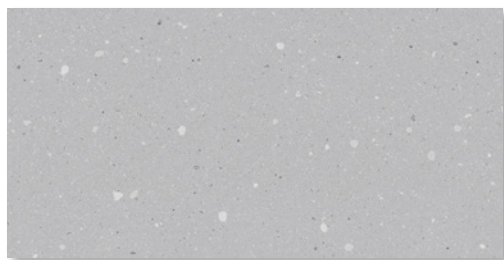
30x60 cm
Matt



W63464R
dMatera Avorio
30x60 - Gol. A



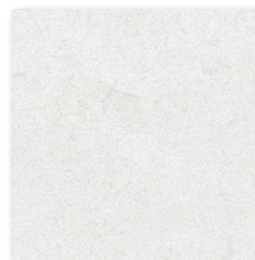
W63864R
dMatera Giorno
30x60 - Gol. B



W63465R
dMatera Grigio
30x60 - Gol. A



W63865R
dMatera Notte
30x60 - Gol. B



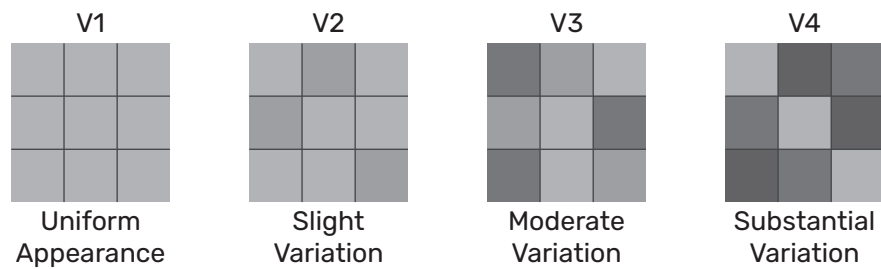
33328RP
dPiatto Bone
30x30 - Gol. B

Recommended matt
flooring with protection
(slip resistant surface)

Shade Variations



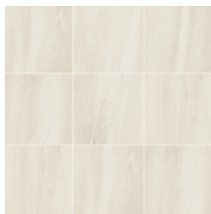
Shade variations are the characteristic of the tile that deliberate and visible differences in graphics and colour hue. Digital Tecnica technology creates stunning ceramic tiles with hyper-realistic surface tones, markings and textures which mimic a range of natural materials including; stone, timber, terracotta, cement, mosaic, marble and more.



V1 (Uniform Appearance)

Differences among pieces from the same production run are minimal.

Austin White
50x50



V2 (Slight Variation)

Clearly distinguishable differences in texture and/or pattern within similar colors.

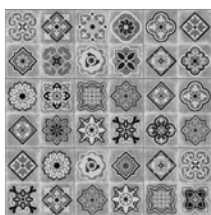
dCervino Bone
50x50



V3 (Moderate Variation)

Amount and intensity of colors on each piece may vary significantly.

dTimber Brown
50x50



V4 (Substantial Variation)

Random color differences each tile, so that one tile may have totally different colors from other tiles.

dBudapest Vintage
50x50

Packaging Information





FACTORY	SIZE (CM)	PCS/BOX	APPROX. SQM/BOX	APPROX. WEIGHT/BOX (KG)	BOXES/PALLET	PALLETS/CONTAINER	APPROX. WEIGHT/PALLET (KG)	BOXES/CONTAINER	APPROX. GROSS WEIGHT/CONTAINER (TONNE)	APPROX. SQM/CONTAINER
RECTIFICADO WALL										
SRKI	30x60	5	0.90	15.7	84	18	1344	1512	24.2	1361
	30x30	11	0.99	16.8	81	17	1386	1377	23.6	1363

NOTE :

- Packing information may vary depending on specification of each motive and size.
- The colours illustrated in this brochure are produced near to actual colours.

Technical Specification



TECHNICAL CHARACTERISTIC	TEST METHOD OR AS PER NORM	FLOOR TILE		WALL TILE	
		ISO 13006 REQUIREMENT		ISO 13006 REQUIREMENT	
Length and Width	ISO 10545 - 2	± 0.6 %	± 0.4 %	± 0.5 %	± 0.4 %
Side Straightness	ISO 10545 - 2	± 0.5 %	± 0.3 %	± 0.3 %	± 0.3 %
Rectangularity	ISO 10545 - 2	± 0.6 %	± 0.4 %	± 0.5 %	± 0.4 %
Center Curvature & Edge Curvature	ISO 10545 - 2	± 0.5 %	- 0.15 % to + 0.25 %	- 0.3 % to + 0.5 %	- 0.15 % to + 0.25 %
Warpage	ISO 10545 - 2	± 0.5 %	± 0.3 %	± 0.5 %	± 0.3 %
Thickness	ISO 10545 - 2	± 5.0 %	± 4.0 %	± 10 %	± 3.0 %
Water Absorption	ISO 10545 - 3	B1b ≤ 3.0 %	B1 < 3.0 %	B3 > 10 %	B3 Less than 18 %
Modulus of Rupture	ISO 10545 - 4	B1b 30 Ind. Min. 27N/mm ²	≥ 35 N/mm ²	≥ 15 N/mm ²	≥ 17 N/mm ²
Crazing Resistance	ISO 10545 -11	Required	Resistant	Required	Resistant
Chemical Resistance	ISO 10545 - 13	Minimum Class GB	Minimum Class GB	Minimum Class GB	Minimum Class GB
Stain Resistance	ISO 10545 - 14	Minimum Class 3	Minimum Class 4	Minimum Class 3	Minimum Class 5
Abrasion Resistance	ISO 10545 - 7	Group I to V	Group III to V	Not Required	Not Required

NOTE :

- The governing sizes and weights are subject to the usual variations expected of fired ceramic productions.
- Slight variations of shades/colours and surface finishes are inherent due to the nature of ceramic tile production process.